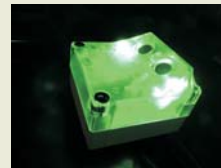


DATASHEET

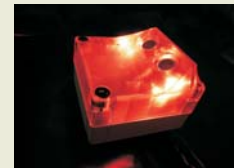


TCS - Single Space Monitoring TCS-USS350E

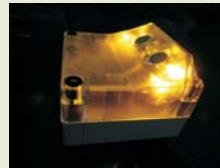
Every parking space is monitored in a single space parking guidance system. A sensor is installed on the ceiling within 30cm of the end of each parking space. Internal LED's illuminate green when space is unoccupied and red when space is occupied. Other color options available.



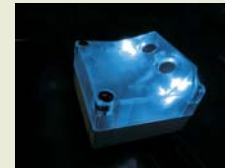
Unoccupied



Occupied



Reserved/VIP



ADA/Handicap Space

Technical data

Type: Ultrasonic Distance Measurement
 Dimensions: 4 3/4" x 4 1/4" x 1 1/4" (W x H x D)
 Measuring Frequency: 41 kHz
 Spectrum: <1kHz
 Emitting Angle: 30°
 Luminous Intensity: >10 Cd (per LED)
 Voltage: 24VDC
 Power: 16 mA
 Intake: 0.4 Watt (average)
 Data Transfer: RS485
 Operating Temperature: -4°F to +158°F
 (-20°C to +70°C)
 Protection Class: IP54 inner area

Operational data

Detection of vehicles
 Flexible installation options
 Maintenance free

Connection

The power and data communication is conducted through the same cable. A four conductor cable of 20 AWG.

Function

The sensor detects occupancy status through ultrasonic distance measurement. The measured value is transmitted to the networked zone controller, and is compared to the standard ceiling height value. When a vehicle occupies a parking space the values do not match, and the sensor detects a vehicle. Subsequently the indicator LED light above the parking space changes from green (unoccupied) to red (occupied). A maximum of 32 sensors can be connected to the same data line. The zone controller employs a three bus system allowing up to 96 single space sensors connected to a single controller.

